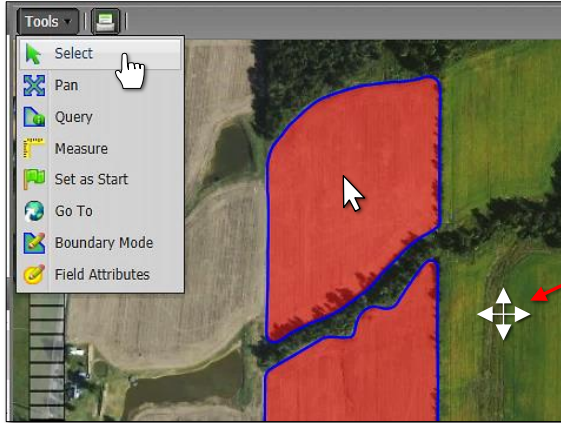


Map Tab - Tools Tab

The Tools Tab provides the following functions:

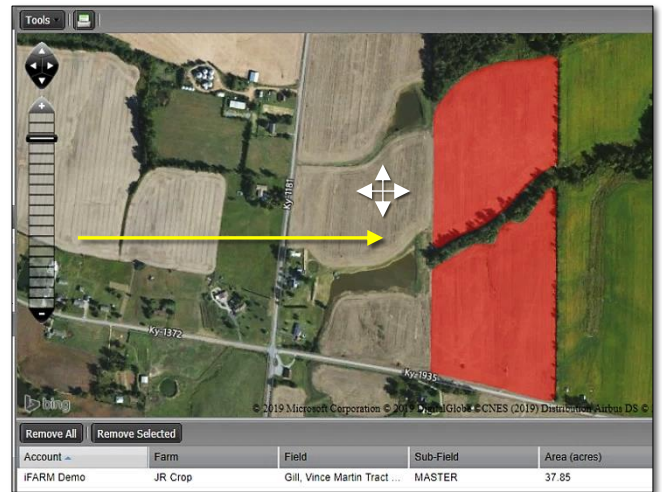
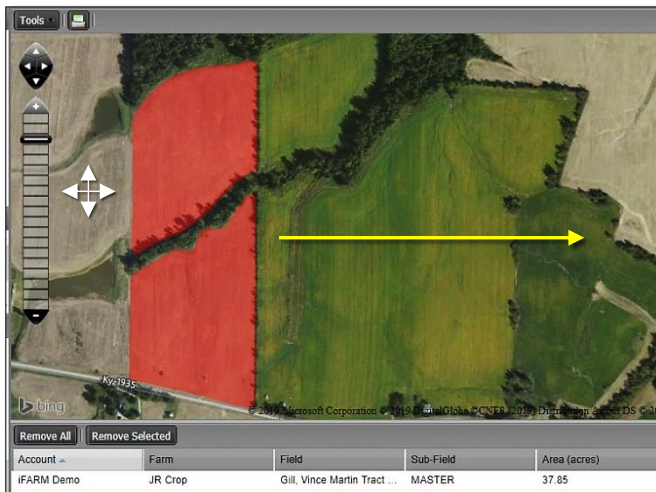
1. **Select:** This will give you an arrow (cursor) that allows you to select a specific field. The boundary will outline in **blue** when selected. Users can also click and hold in an area outside the field to move (drag) the map as needed.



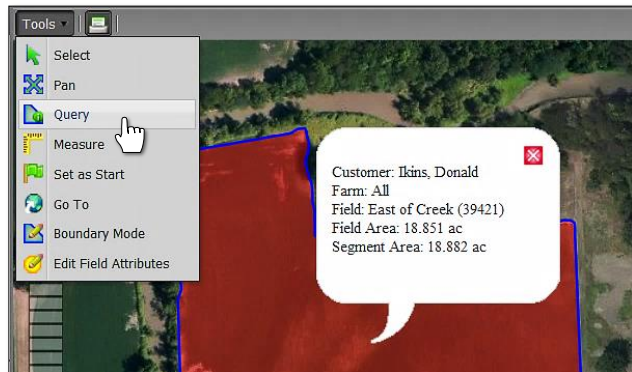
Note: Once you start editing a specific field, you must click and hold outside of all visible fields to shift the map within your viewing pane.

After you have finished editing the field boundary, you can once again click within a field boundary to shift the map.

2. **Pan:** This allows you to shift the entire map (any direction) by clicking / holding the left mouse button anywhere in the map, and moving the map to shift it to a specific area.



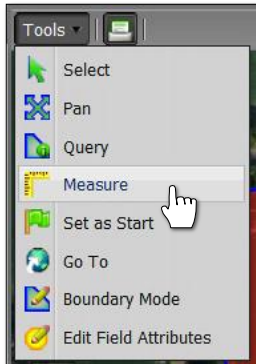
3. **Query:** This function allows you to see specific information about a field when clicked upon.
 - A. Select the **Query** option. Go to a field in the map and click on it. The following information bubble will be displayed (below).
 - B. Click on the **red X** when finished viewing the field information.



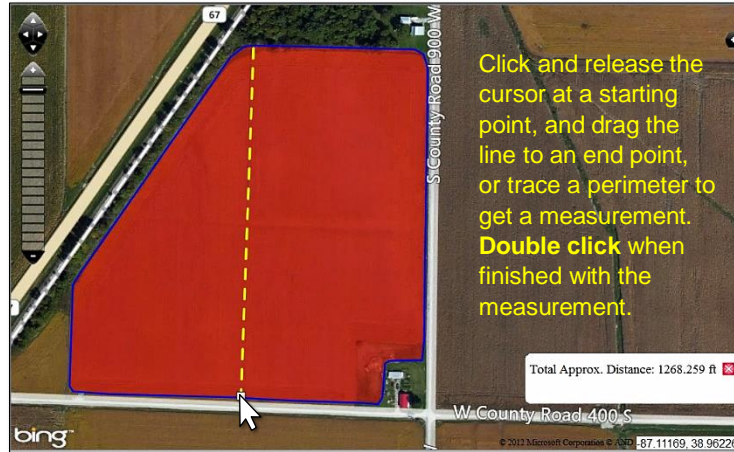
Note: Clicking the **Select** option will take you out of the Query mode.

Tools Tab continued...

- Measure:** Selecting this function allows you pull a line across a field section, or measure the perimeter to get a running foot value of a given area.



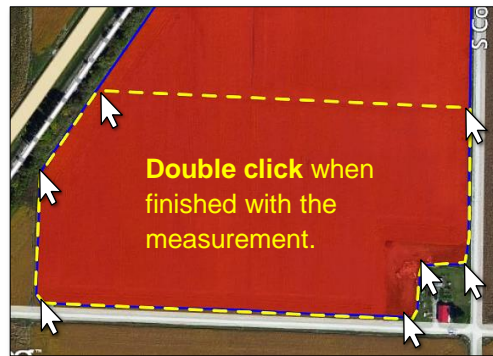
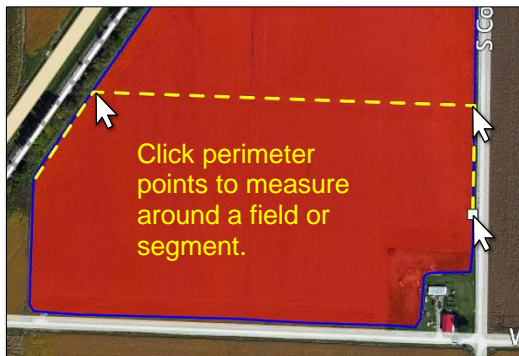
A. Select the **Measure** function.



Note: The measurement incrementally displays in the lower window as you use the tool.

- Click once at a starting point and move the mouse across the map / field. A yellow line will follow your movements (right).

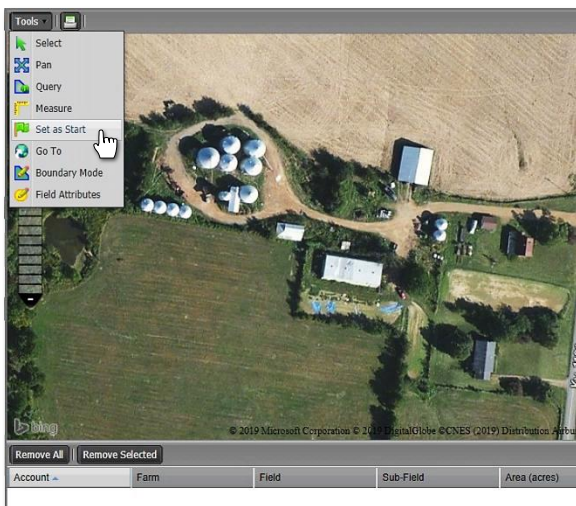
- A single click will pause the first measurement. You can now move the mouse in another direction to continue measuring / trace a perimeter; or you can double click to conclude the measurement.



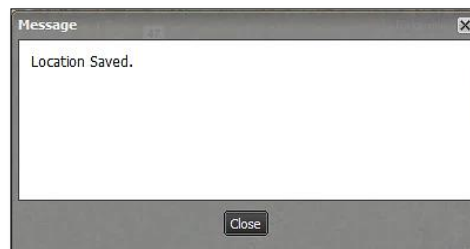
Note: Clicking the **Select** option will take you out of the Measure mode.

- Set as Start:** This option allows the user to set a specific location / farm map upon logging in.

A. Once logged in, use the map sizing scale to display a specific location / map / town / farm / etc.



- Once the desired view is displayed, select the **Set as Start** option. An indicator will appear stating the location is saved.

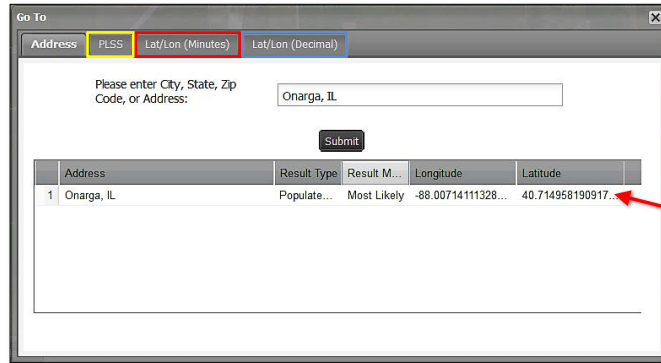
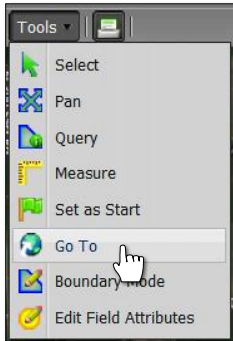


- The next time the user logs into I.F.A.R.M., the new custom view will display automatically.

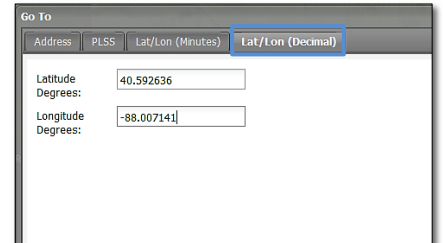
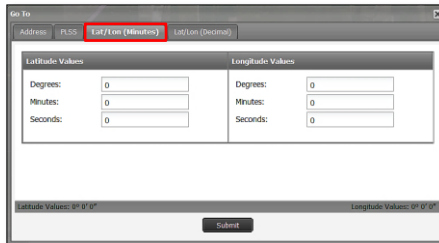
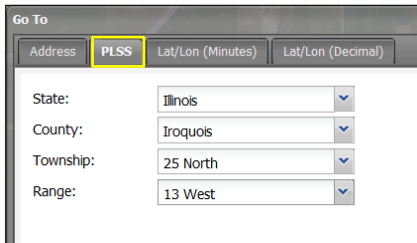
Tools Tab continued...

6. Go To: Selecting this function allows you locate map areas via different search options.

A. Click on the **Go To** option. A **Go To** window will appear showing all search options (Address, PLSS, Lat-Lon).

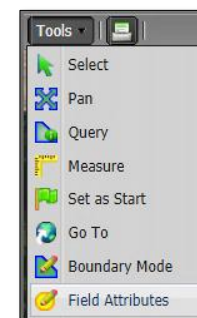
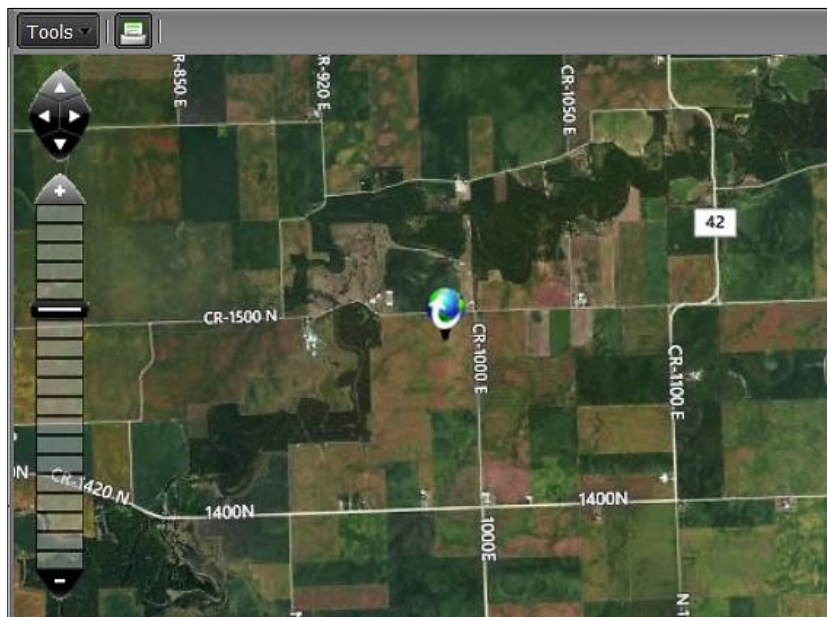


Note: For Address search, enter a city, state, zip code or address and click **Submit**. Once a matched location shows, double click on the address to go to the map view.



Note: For all search options, once the criteria are entered, click on the **Submit** button.

B. The chosen location will be indicated with a marker. Use the zoom / pan features to get the view needed.



7. Boundary Mode / Field Attributes: Reference the Boundary Mode & Field Attributes tutorials.